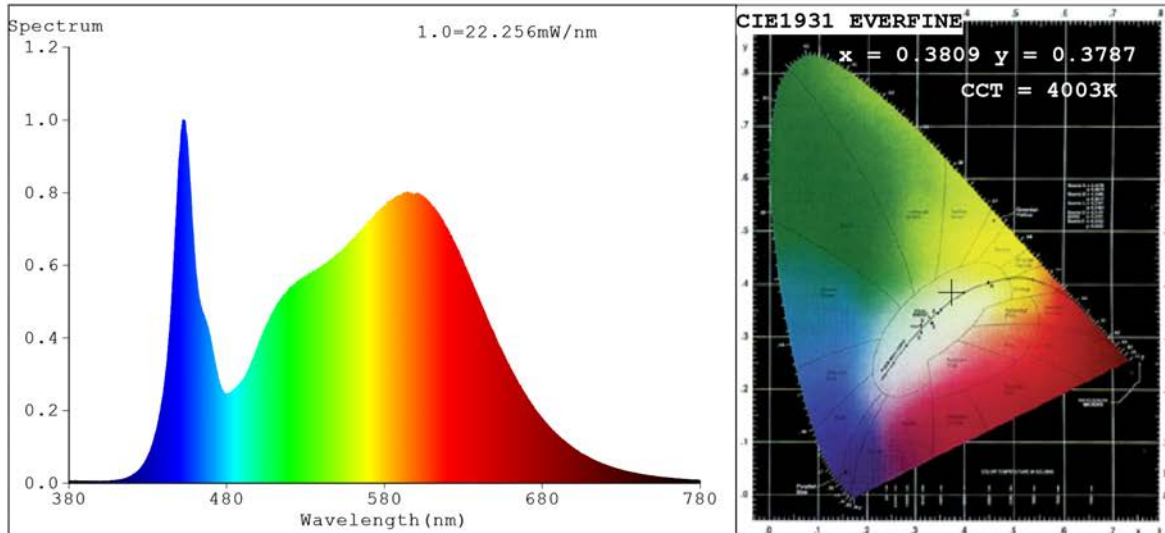


Spectrum Test Report



Color Parameters:

Chromaticity Coordinate: $x=0.3809$ $y=0.3787$ / $u'=0.2246$ $v'=0.5025$
 CCT=4003K (Duv=0.0008) Dominant WL:Ld =578.6nm Purity=28.0%
 Ratio:R=18.5% G=77.7% B=3.8%; Peak WL:Lp=452.6nm FWHM=18.0nm
 Render Index:Ra=84.0 CRI=77.6 TM30:Rf=82 Rg=95
 R1 =83 R2 =91 R3 =96 R4 =82 R5 =82 R6 =87 R7 =86
 R8 =65 R9 =11 R10=78 R11=82 R12=61 R13=85 R14=98 R15=76

Photo Parameters:

Flux = 1022 lm Eff. : 124.14 lm/W Fe = 3.091 W Scotopic:1752.4 S/P:1.7139

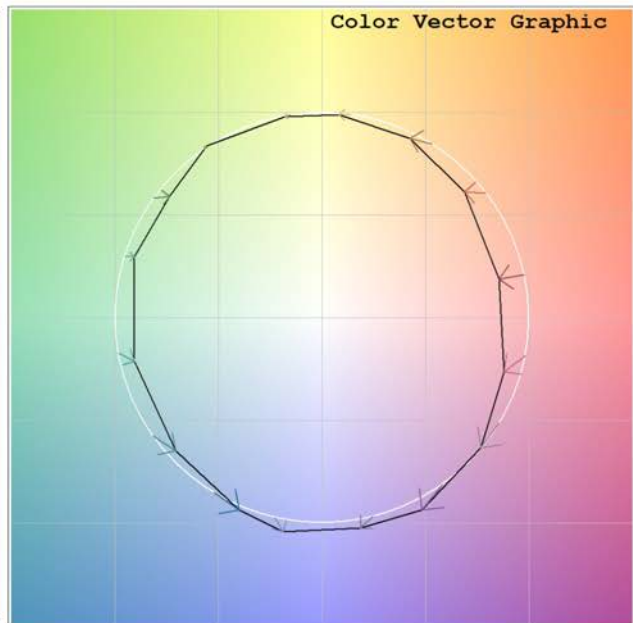
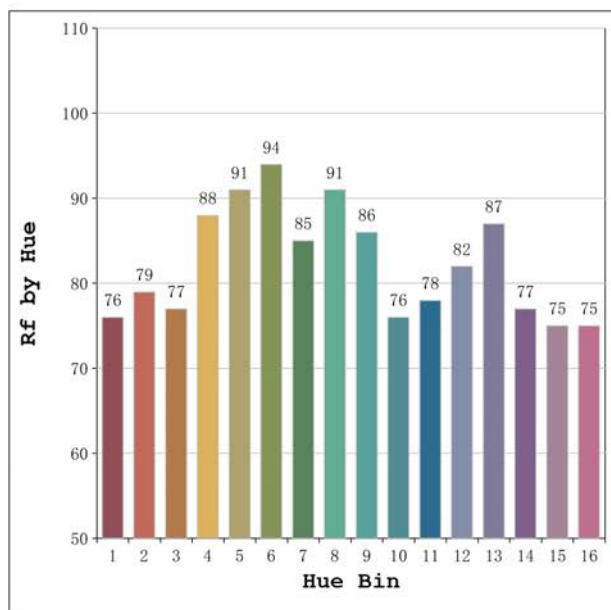
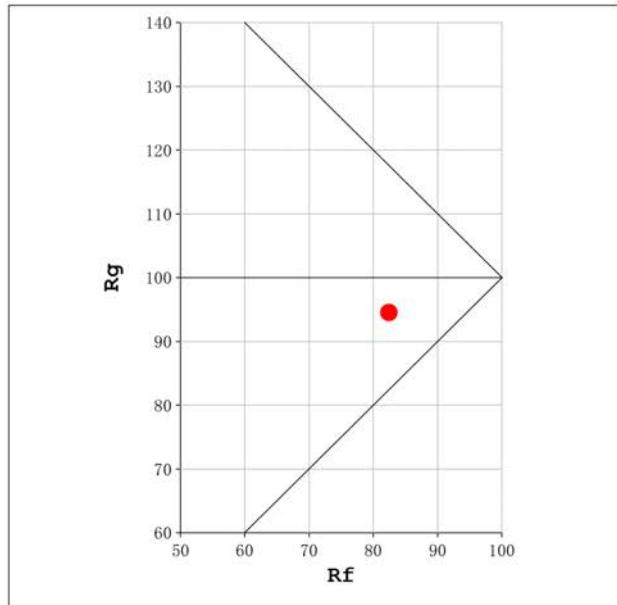
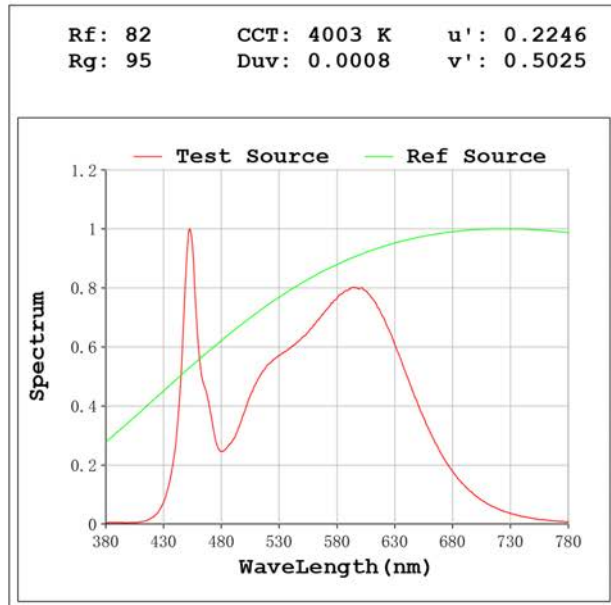
Electrical parameters:

V = 47.998 V I = 0.1716 A P = 8.236 W PF = 1.000

Status: Integral T = 1256 ms Ip = 46460 (71%)

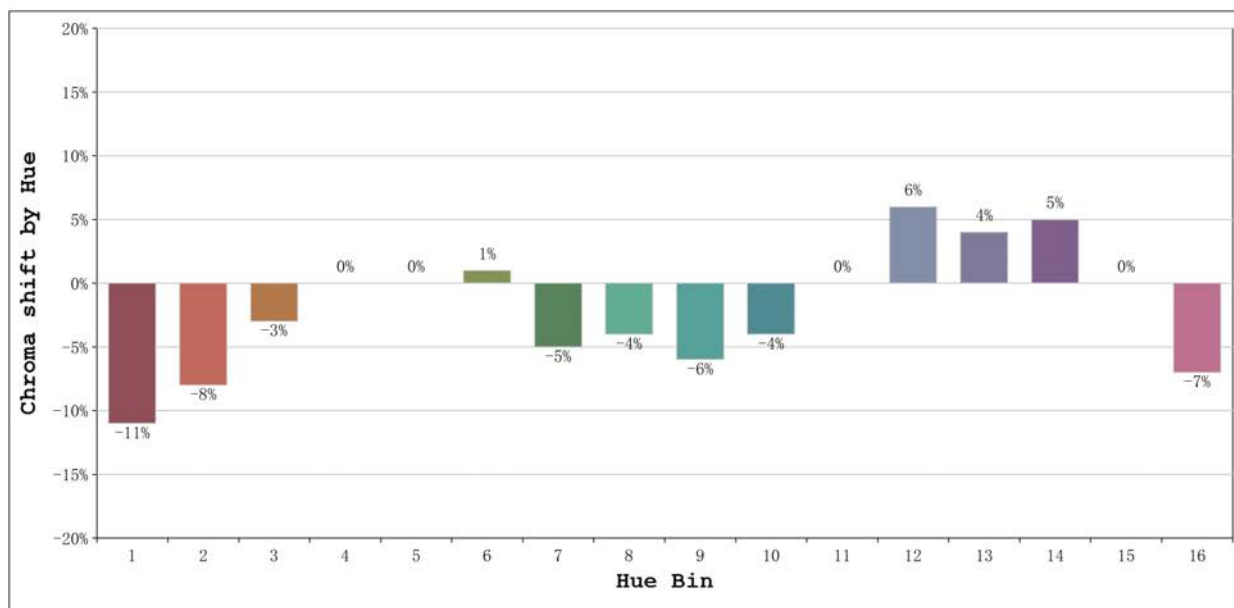
Model:Castellón 4000K
 Tester:Sergio Carneros
 Temperature:27Deg
 Manufacturer:Luz Negra S.L

Number: 33.215
 Date:2024-05-27 15:30:55
 Humidity:40%
 Remarks:100cm de tira flexible



Model:Castellón 4000K
 Tester:Sergio Carneros
 Temperature:27Deg
 Manufacturer:Luz Negra S.L

Number: 33.215
 Date:2024-05-27 15:30:55
 Humidity:40%
 Remarks:100cm de tira flexible



Hue Bin	Hue Angle	Rf	Graphic shift(%)	
			Chroma	Hue
1	0.0° - 22.5°	76	-11	0
2	22.5° - 45.0°	79	-8	6
3	45.0° - 67.5°	77	-3	10
4	67.5° - 90.0°	88	0	5
5	90.0° - 112.5°	91	0	3
6	112.5° - 135.0°	94	1	-1
7	135.0° - 157.5°	85	-5	-4
8	157.5° - 180.0°	91	-4	0
9	180.0° - 202.5°	86	-6	5
10	202.5° - 225.0°	76	-4	12
11	225.0° - 247.5°	78	0	15
12	247.5° - 270.0°	82	6	5
13	270.0° - 292.5°	87	4	-6
14	292.5° - 315.0°	77	5	-14
15	315.0° - 337.5°	75	0	-14
16	337.5° - 360.0°	75	-7	-9

Model:Castellón 4000K
Tester:Sergio Carneros
Temperature:27Deg
Manufacturer:Luz Negra S.L

Number: 33.215
Date:2024-05-27 15:30:55
Humidity:40%
Remarks:100cm de tira flexible